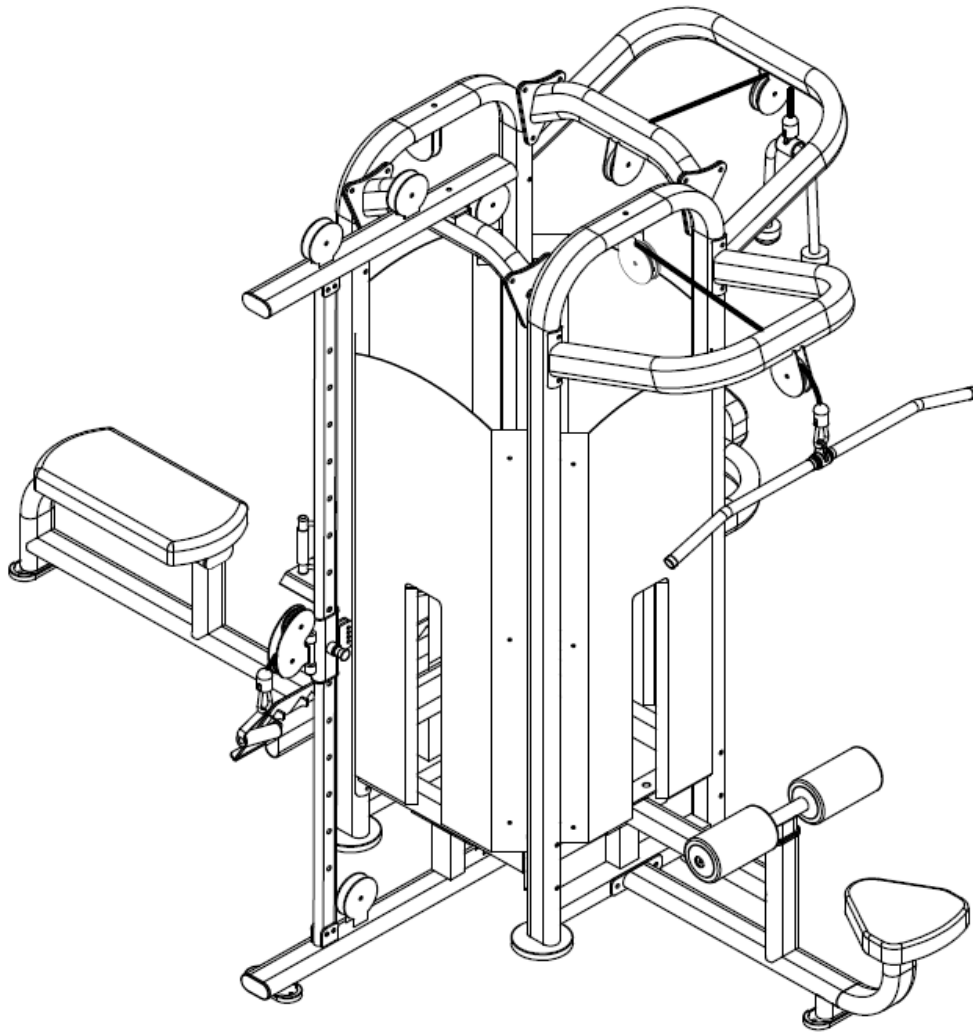




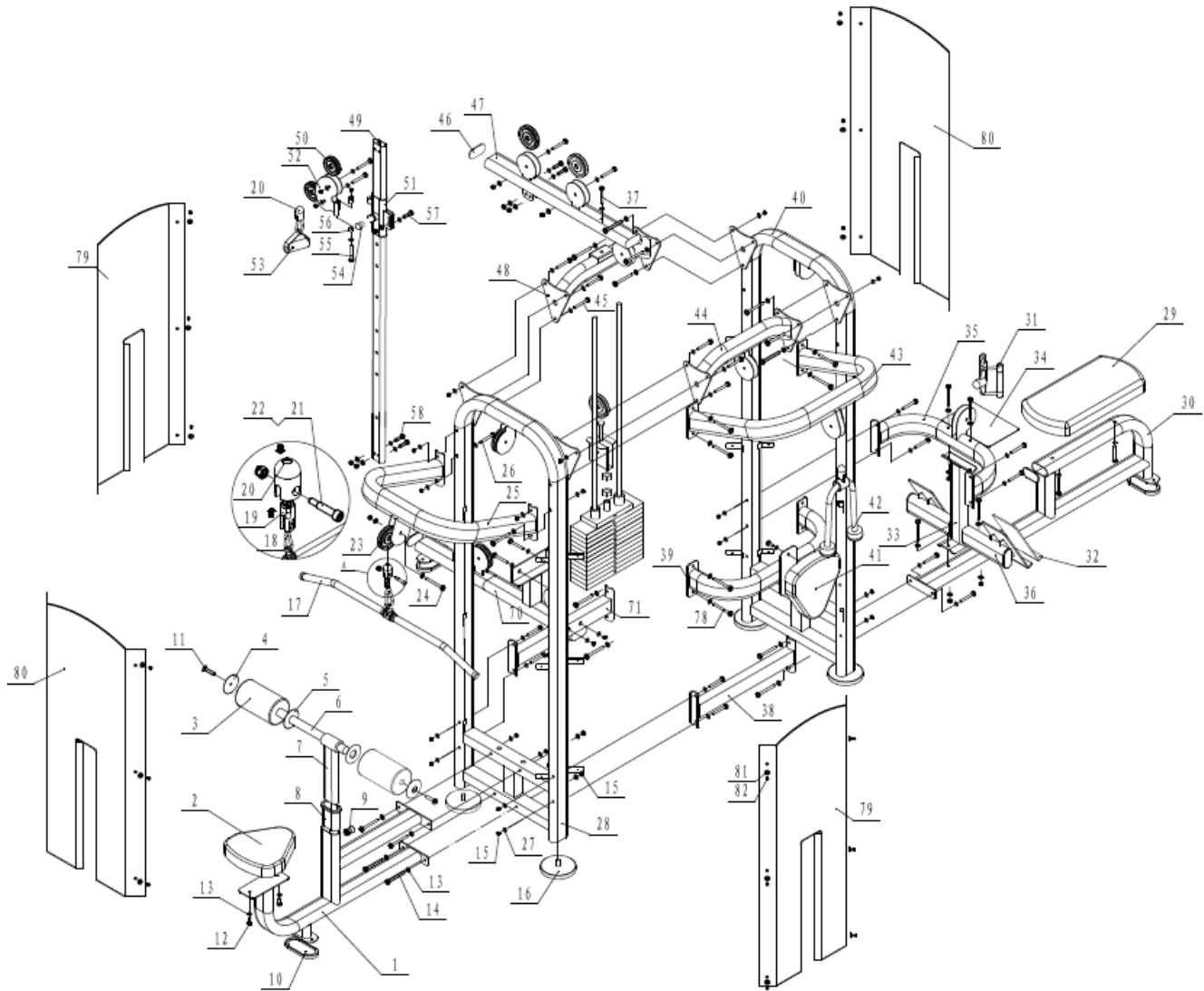
HIT FITNESS

Hit Fitness Comm 4 Station Multigym

HIT00751



EXPLORE DRAWING



PART LIST

PART NO	PART NAME	Q'TY
1	High pull main frame	1
2	Seat	1
3	Circle pad	2
4	Circle pad outer cover	2
5	Aluminum gear sleeve	2
6	Circle pad fixed tube	1
7	Circle pad adjusting frame	1
8	Adjustable sleeve	1
9	Pull forelock	1
10	Base frame sleeve	4
11	M10*30 Allen head bolt	2
12	M10*25 Allen head bolt	17
13	Φ10 Washer	108
14	M10*90 Allen head bolt	6
15	M10 Nylon nut	67
16	level frame	4
17	Up pull handlebar	1
18	Gourd hook	2
19	Pull wire fixed sleeve	4
20	Rope connect sleeve	4
21	Screw	4
22	M8 Nylon nut	4
23	Big pulley	12
24	M10*50 Allen head bolt	14
25	Up curved support	1
26	M10*120 Allen head bolt	16
27	Φ10 Arc washer	38
28	Weight stack box	1
29	Seat	1
30	Down pull main frame	1
31	Down pull handlebar	1
32	Pedal	2
33	Vertical support	1
34	Mat	1
35	Handlebar frame	1
36	Pedal tube	2
37	M10*70 Allen head bolt	10
38	Down support	1
39	Pad frame	1
40	Weight stack box	1

41	Pad	1
42	Triceps pull rope	1
43	Up curved support	1
44	Up crossbar	1
45	M10*140 Allen head bolt	2
46	Flat oval plug	5
47	Up crossbar	1
48	Up curved support	1
49	Adjusting tube	1
50	Small pulley	2
51	Sliding tube	1
52	Small pulley frame	1
53	Handlebar	1
54	Pull forelock	1
55	M10*100 Allen head bolt	1
56	Copper sleeve	2
57	M10*35 Allen head bolt	1
58	M10*55 Allen head bolt	4
59	Guide rod	8
60	M16*90 Allen head bolt	1
61	Moving pulley frame	1
62	M16 Nut	5
63	Top plate	4
64	Weight stack box	68
65	Spring cushion	8
66	Shaft circlip	8
67	M10*20 fastening screw	8
68	Guide rod fixed sleeve	8
69	Strong magnetic latch	4
70	Bottom connecting support	1
71	Down crossbar	1
72	Pull wire fixed rod	3
73	M6*12 Allen head bolt	9
74	Rope1	1
75	Rope2	1
76	Rope3	1
77	Rope4	1
78	M10*75 Allen head bolt	2
79	Iron cover B	2
80	Iron cover A	2
81	Plastic washer	24
82	M5*16 Bolt	24

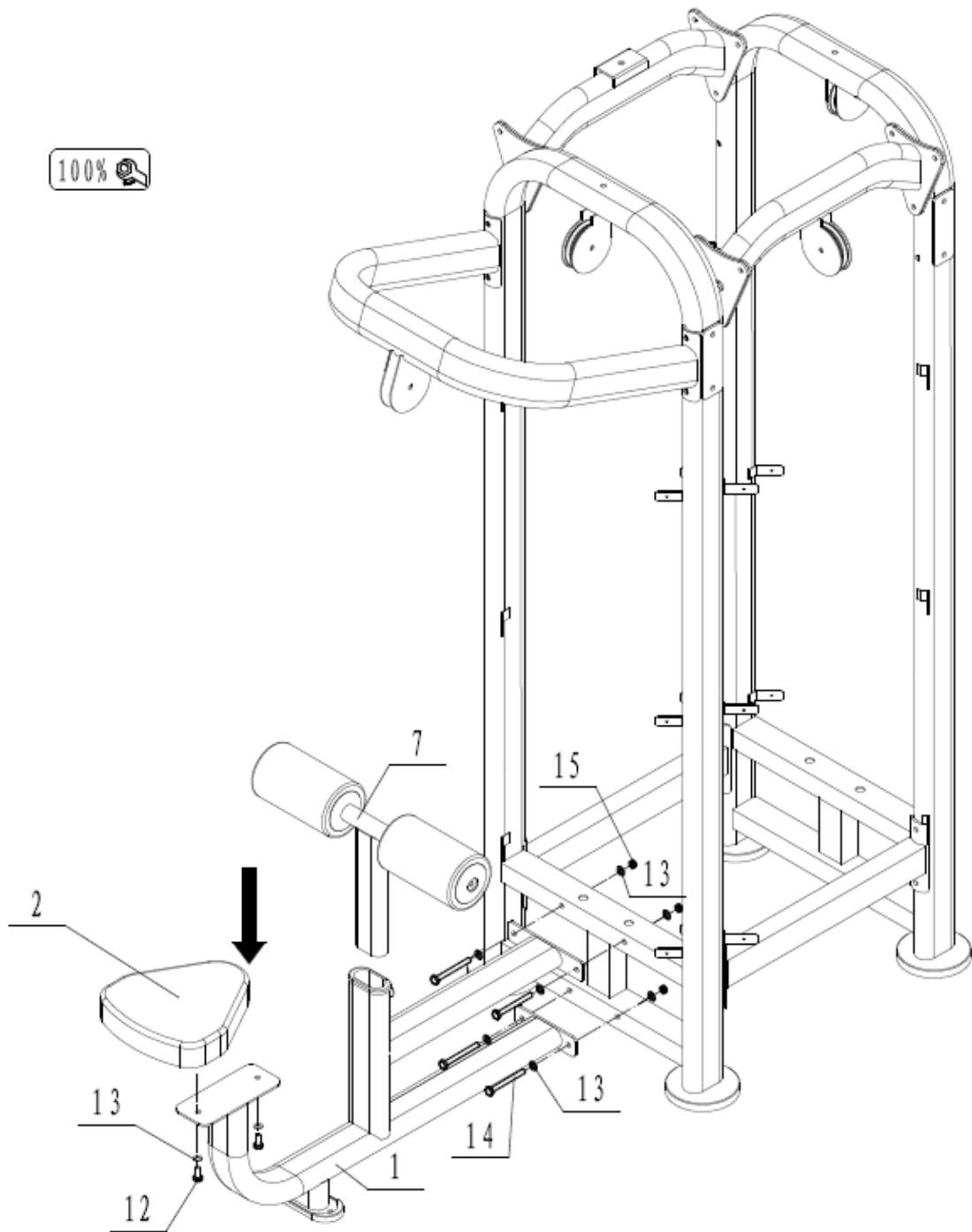
HARDWARE LIST 1

NO.	DESCRIPTION	Q'TY
12	M10*25 Allen head bolt	18
13	Φ10 Washer	78
14	M10*90 Allen head bolt	6
15	M10 Nylon nut	49
26	M10*120 Allen head bolt	16
27	Φ10 Arc washer	38
37	M10*70 Allen head bolt	10
45	M10*140 Allen head bolt	2
46	Flat oval plug	1
57	M10*35 Allen head bolt	1
58	M10*55 Allen head bolt	4
78	M10*75 Allen head bolt	4
81	Plastic washer	24
82	M5*16 Bolt	24

HARDWARE LIST 2

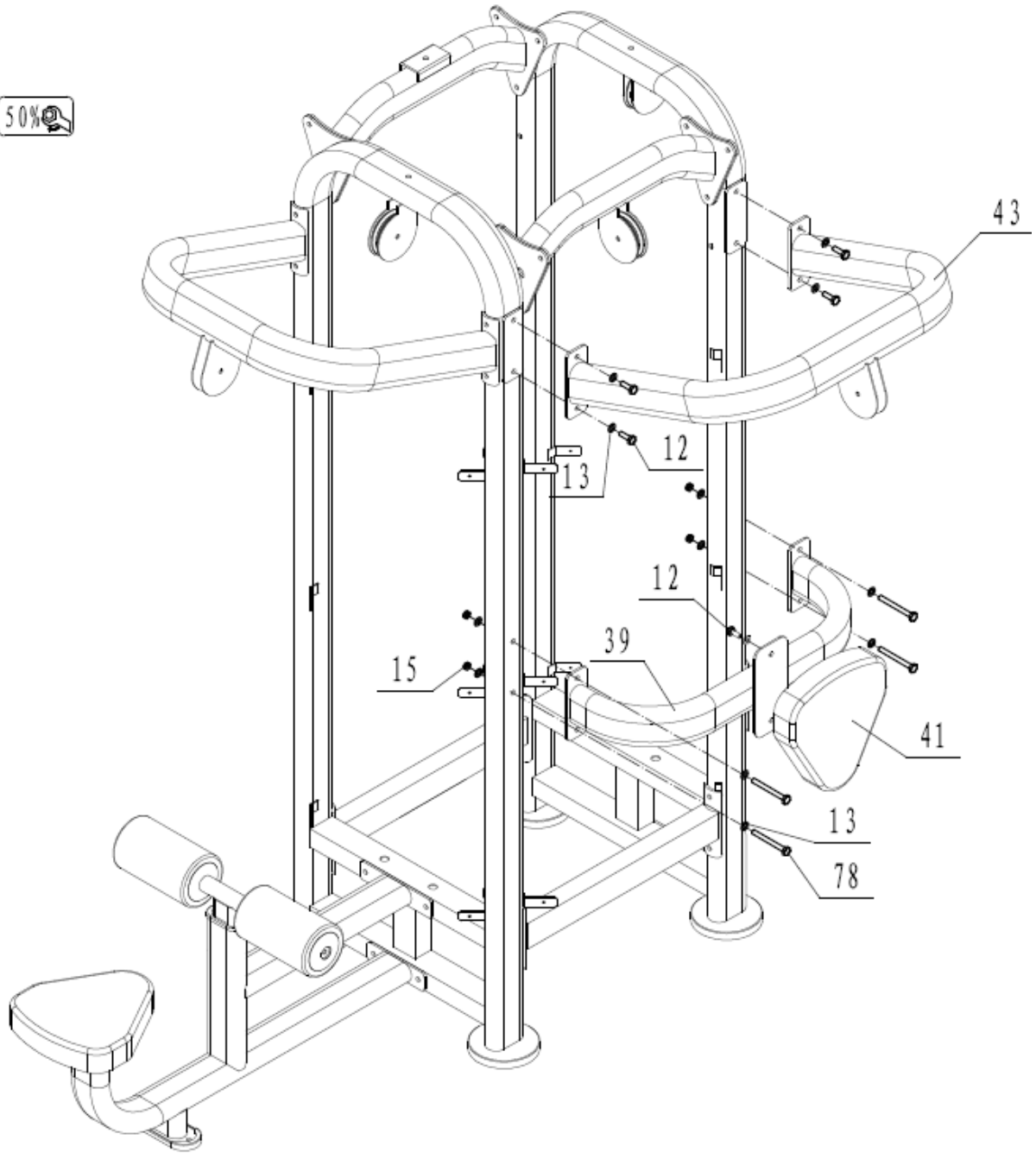
NO.	DESCRIPTION	Q'TY
62	M16 Nut	5
65	Spring cushion	8
66	Shaft circlip	8
67	M10*20 fastening screw	8
68	Guide rod fixed sleeve	8
69	Strong magnetic latch	4
72	Pull wire fixed rod	3
73	M6*12 Allen head bolt	9
T1	3#Allen wrench	1
T2	Phillips screwdriver	1
T3	14-17 Fork Wrench	2
T4	5#Allen wrench	1
T5	Circlip pliers	1

100%



STEP 2:

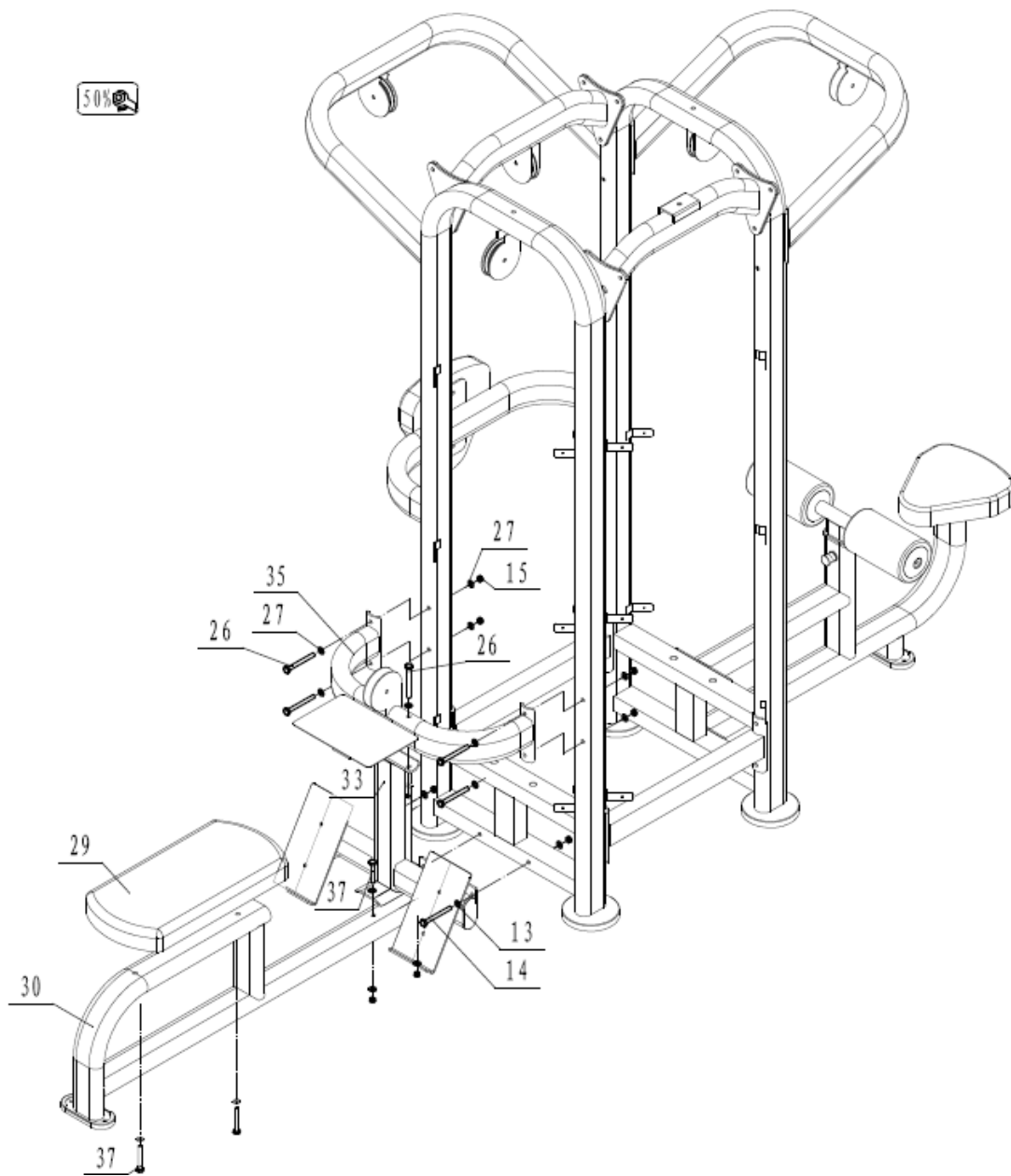
1. Fix High pull main frame 1 to Weight stack box 28 with $\text{Ø}10$ Washer 13, M10*90 Allen head bolt 14 and M10 Nylon nut 15.
2. Fix Circle pad adjusting frame 7 to High pull main frame 1.
3. Fix Seat 2 to High pull main frame 1 with M10*25 Allen head bolt 12 and $\text{Ø}10$ Washer 13.



STEP 3:

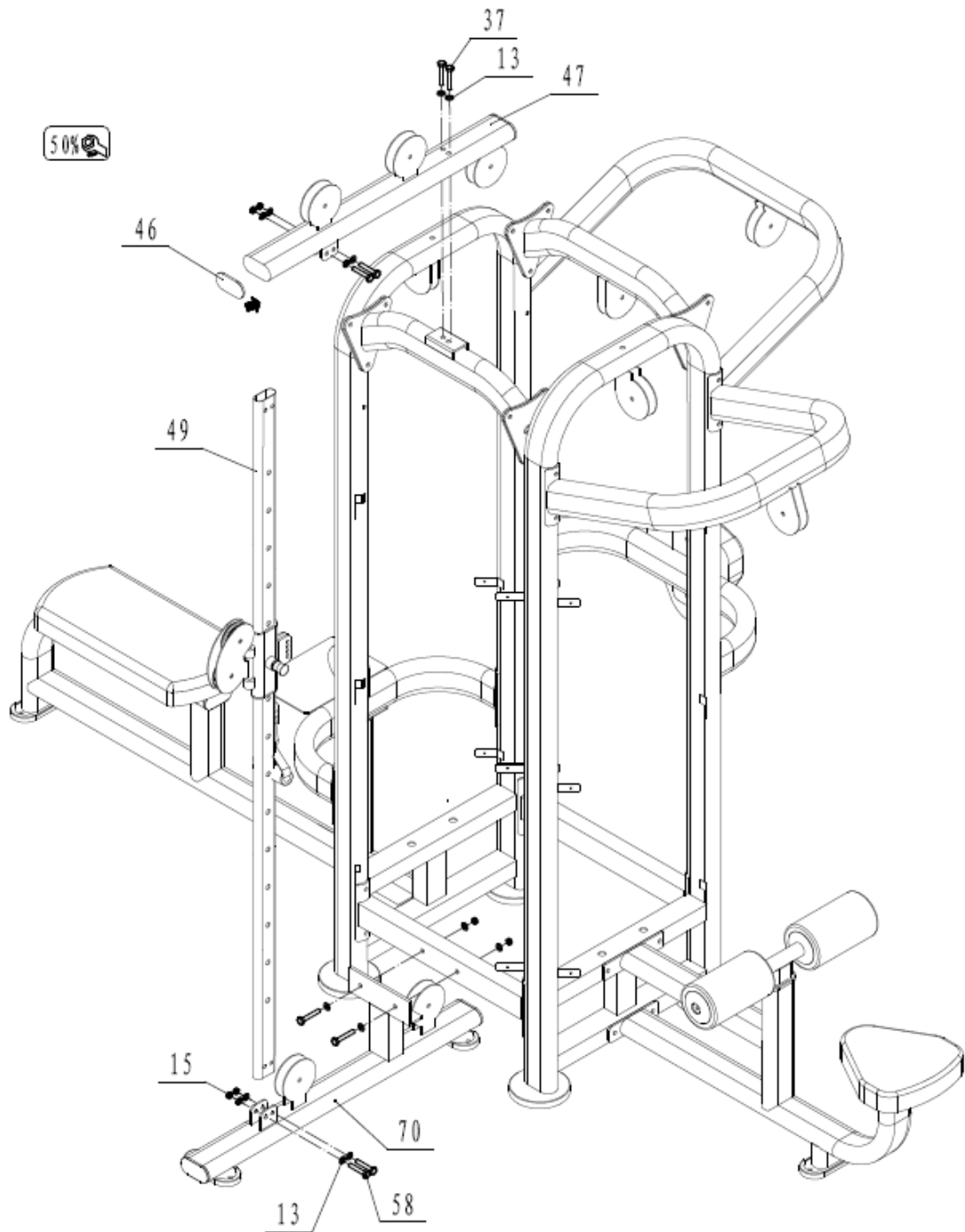
1. Fix Pad frame 39 to Weight stack box 28 with $\Phi 10$ Washer 13, M10 Nylon nut 15 and M10*75 Allen head bolt 78.
2. Fix Pad 41 to Pad frame 39 with M10*25 Allen head bolt 12.
3. Fix Up curved support 43 to Weight stack box 28 with M10*25 Allen head bolt 12 and $\Phi 10$ Washer 13.

Do not fasten the bolts.



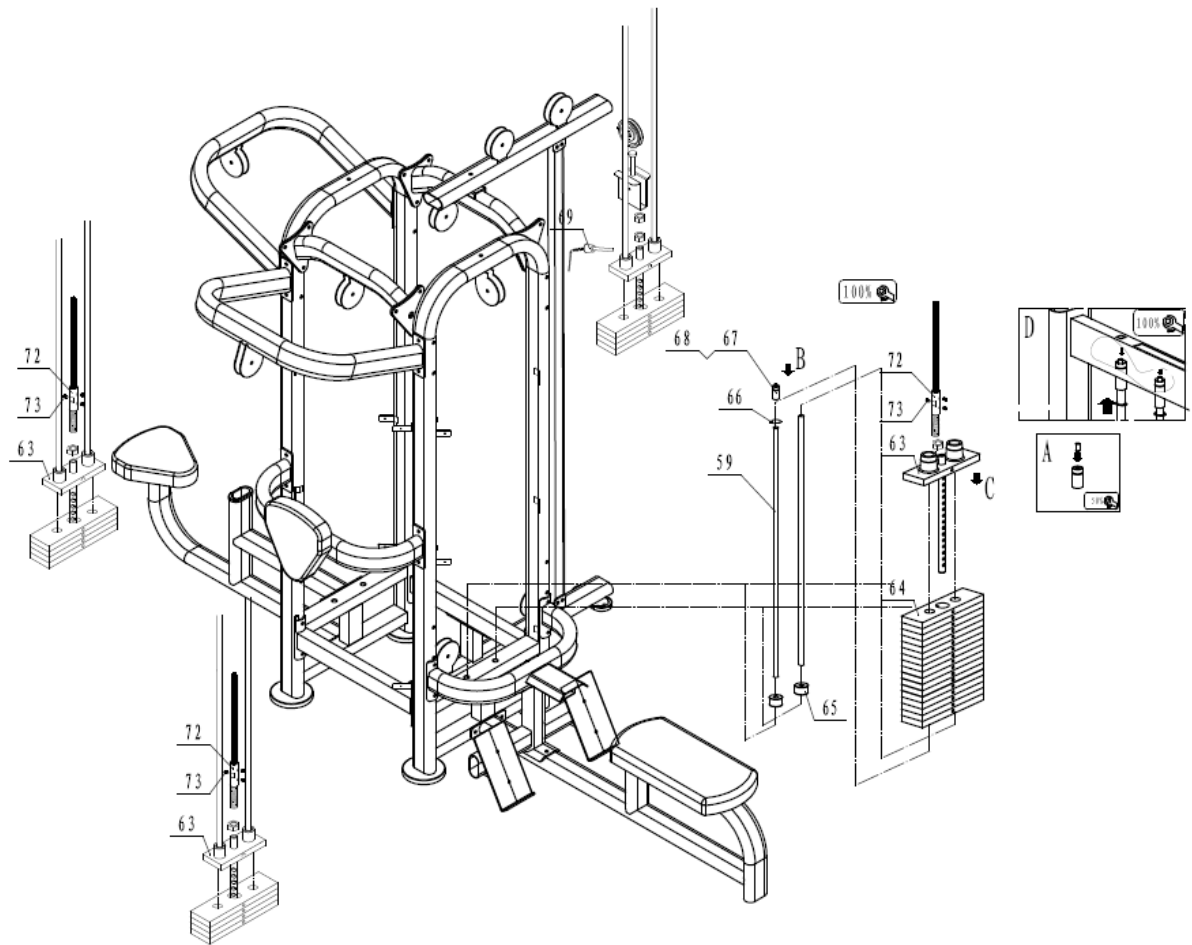
STEP 4:

1. Fix Pad frame 30 to Weight stack box 40 with $\Phi 10$ Washer 13, M10 Nylon nut 15 and M10*90 Allen head bolt 14.
2. Fix Vertical support 33 to Pad frame 30 with $\Phi 10$ Washer 13, M10 Nylon nut 15 and M10*70 Allen head bolt 37.
3. Fix Pedal tube 36 to Vertical support 33 with $\Phi 10$ Arc washer 27, M10 Nylon nut 15 and M10*70 Allen head bolt 37.
4. Fix Handlebar frame 35 to Weight stack box 40 with $\Phi 10$ Arc washer 27, M10 Nylon nut 15 and M10*120 Allen head bolt 26.
5. Fix Seat 29 to Pad frame 30 with $\Phi 10$ Washer 13 and M10*70 Allen head bolt 37.



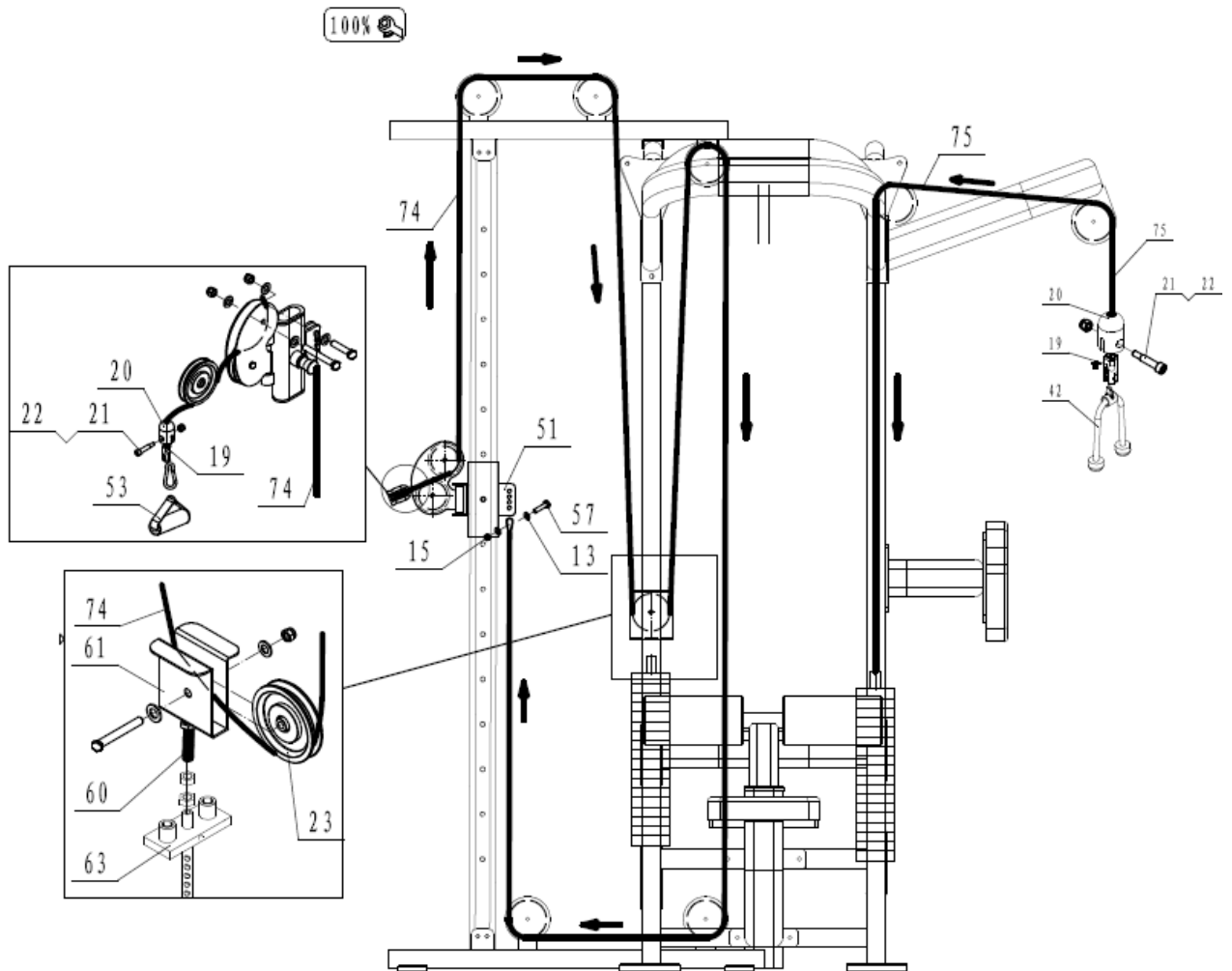
STEP 5:

1. Fix Up crossbar 47 to Up curved support 48 with $\Phi 10$ Washer 13 and M10*70 Allen head bolt 37.
2. Insert Flat oval plug 46 into Up crossbar 47.
3. Fix Bottom connecting support 70 to Down crossbar 71.
4. Fix Adjusting tube 49 to Bottom connecting support 70 with $\Phi 10$ Washer 13, M10 Nylonnut 15 and M10*55 Allen head bolt.



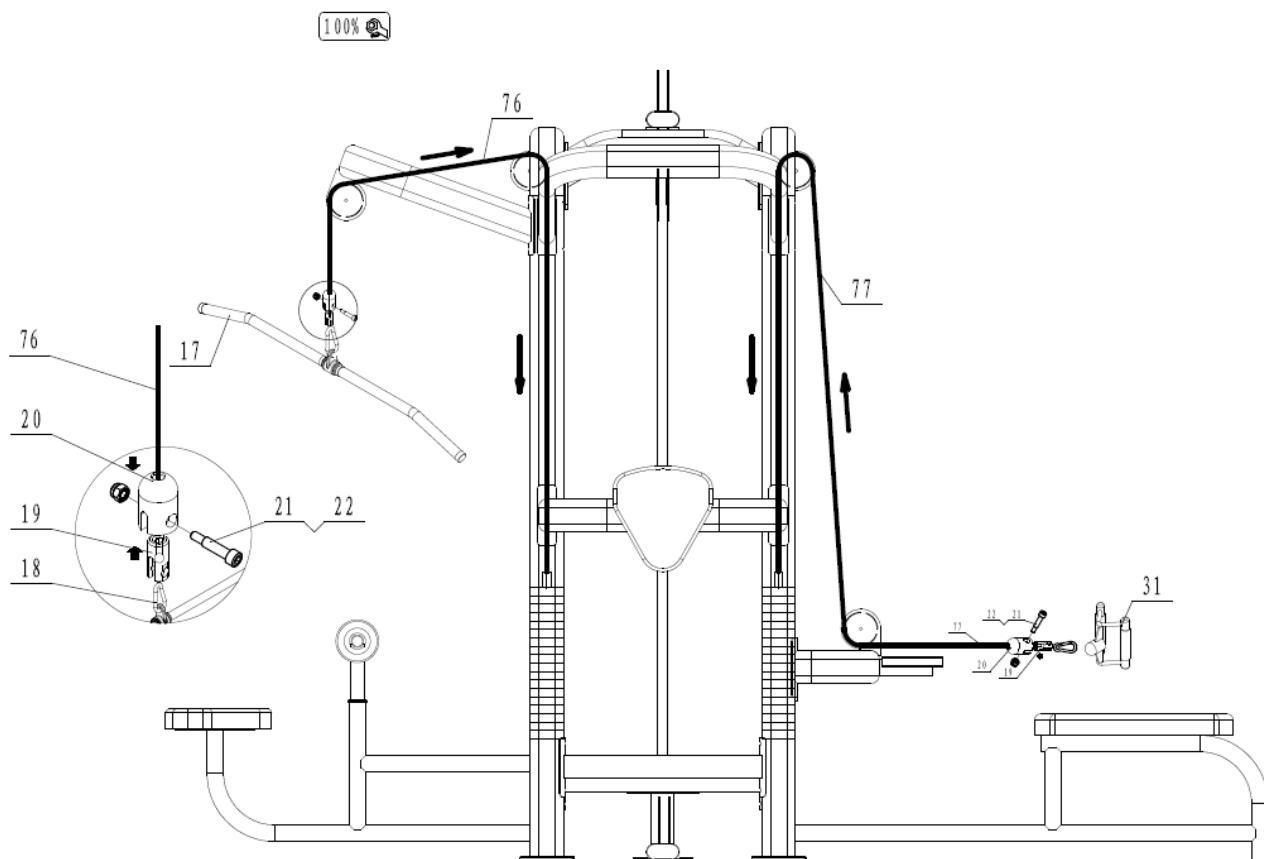
STEP 6:

1. Fix Spring cushion 65 and Guide rod 59 to Weight stack box.
 2. Fix Weight stack 64 and Top plate 63 to Guide rod 59.
 3. Fix Guide rod 59 to Weight stack box with Shaft circlip 66, M10 * 20 fastener screw 67 and Guide rod fixed sleeve 68.
- Fix as the order A-B-C-D



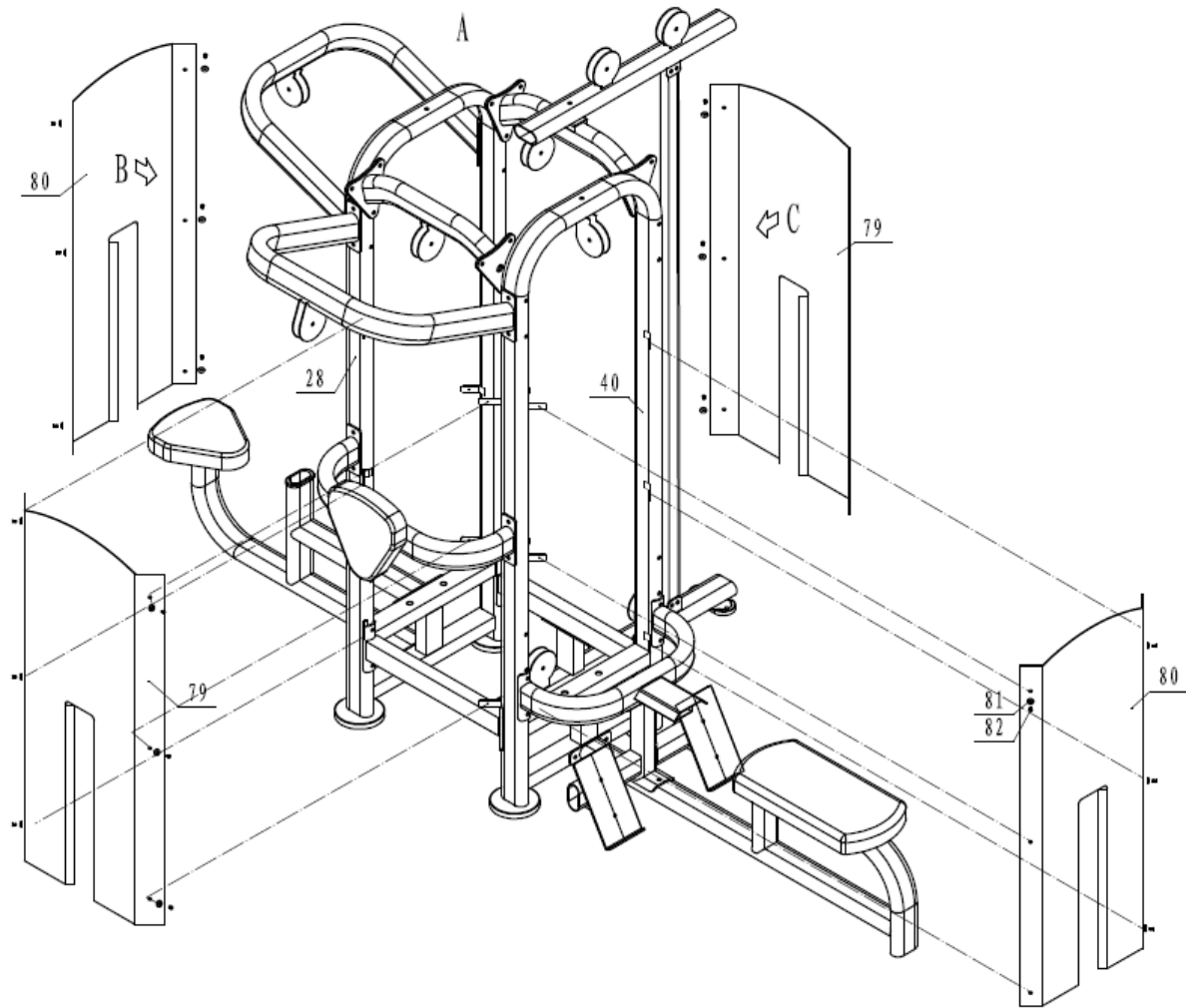
STEP 7:

1. Put Rope1 74 goes as shown above.
2. Fix the Rope to Sliding tube51 with M10*35 Allen head bolt57, Φ 10 Washer13 and M10 Nylonnut15.
3. Put Rope2 75 goes as the picture shows.
4. Fix Rope1 74 to Pull wire fixed sleeve19 with Rope connect sleeve20, Screw21 and M8 Nylon nut, then contact Handlebar53 to Pull wire fixed sleeve19.
5. Fix Rope2 75 to Pull wire fixed sleeve19 with Rope connect sleeve20, Screw21 and M8 Nylon nut, then contact Triceps pull rope42 to Pull wire fixed sleeve19.
6. Fix Big pulley23 to Moving pulley frame61 with M16 * 90 Allen head bolt60.



STEP 8:

1. Put Rope3 76 and Rope4 77 goes as the picture shows.
2. Fix Rope3 76 to Pull wire fixed sleeve19 with Rope connect sleeve20, Screw21 and M8 Nylon nut, then contact Up pull handlebar17 to Pull wire fixed sleeve19 with Gourd hook18.



STEP 9:

Fix Iron cover B79 and Iron cover A80 to Weight stack box with Plastic washer81 and M5 * 16 Bolt82.